

February 1, 2022

Mineral Sensing Technology Live Demo Day

Where mineral exploration, photonics, drone
technology, and advanced modeling meet.



Presented by:



Tuesday, February 1

10:30 am – 1pm: Field Demo of Data Collection Flights at Johnson Mine

1pm – 3:30 pm: Results and Presentations at Johnson Mine & Zoom

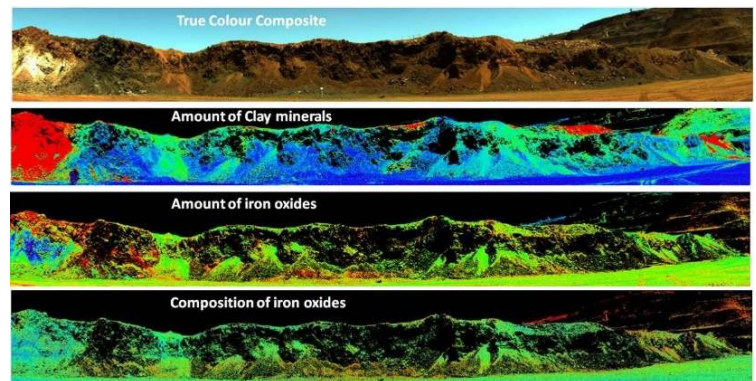
[CLICK HERE TO REGISTER](https://darlingltd.com/about-us/events/)

(<https://darlingltd.com/about-us/events/>)

Join Darling Geomatics, Norsk Electro Optikk (NEO), University of Arizona Mining & Geological Engineering, and Excelsior Mining – Johnson Mine for a live demonstration of state-of-the art technology in hyperspectral imaging, UAVs, and processing used for enhanced, cost-effective mineral detection, identification, and mapping.

The live field demo of data collection is in the morning followed by presentations and discussion of data collection, processing, analysis, results, and mineral mapping in the afternoon. A brown bag lunch will be provided.

You can sign up for the morning session, afternoon session, or both. There is no cost to attend but capacity is limited, so sign up today!



Schedule and Program

Morning Session: Flight Demo at Johnson Mine

Allow 1 hour	Self-travel to Excelsior's Johnson Mine. Plan to arrive at the mine at 10:30 am.
10:30 – 11:00 am	Mine check-in procedure and travel to demo area.
11:00 – 1:00 pm	Flight demos to collect mineral data. Brown bag lunch provided.

Afternoon Session: Results and Presentations at Johnson Mine and Zoom

1:00 – 3:30 pm	Presentations and discussion of flight data processing and results of spectral characterization of minerals and digital terrain maps to identify faults, fractures, and alterations. Attend session in person or via Zoom. Speakers include: <ul style="list-style-type: none">• Mary Darling, CEO, Darling Geomatics• Trond Løke, CEO, NEO• Dr. Friederike Körting, Geological Hyperspectral Application Specialist, NEO
----------------	---

**Directions to
Johnson Mine**

From I-10 and S. Kolb Road Interchange in Tucson: Take I-10 East about 52 miles to Exit 322 Johnson Road. At Exit 322, turn left (north) on N7 Dash Road/Johnson Road. Proceed about 3 miles to the mine gate. Carpooling from UA Tech Park is optional at sign up. [Click here for Google map from I-10 & Kolb to Johnson Mine.](#)